

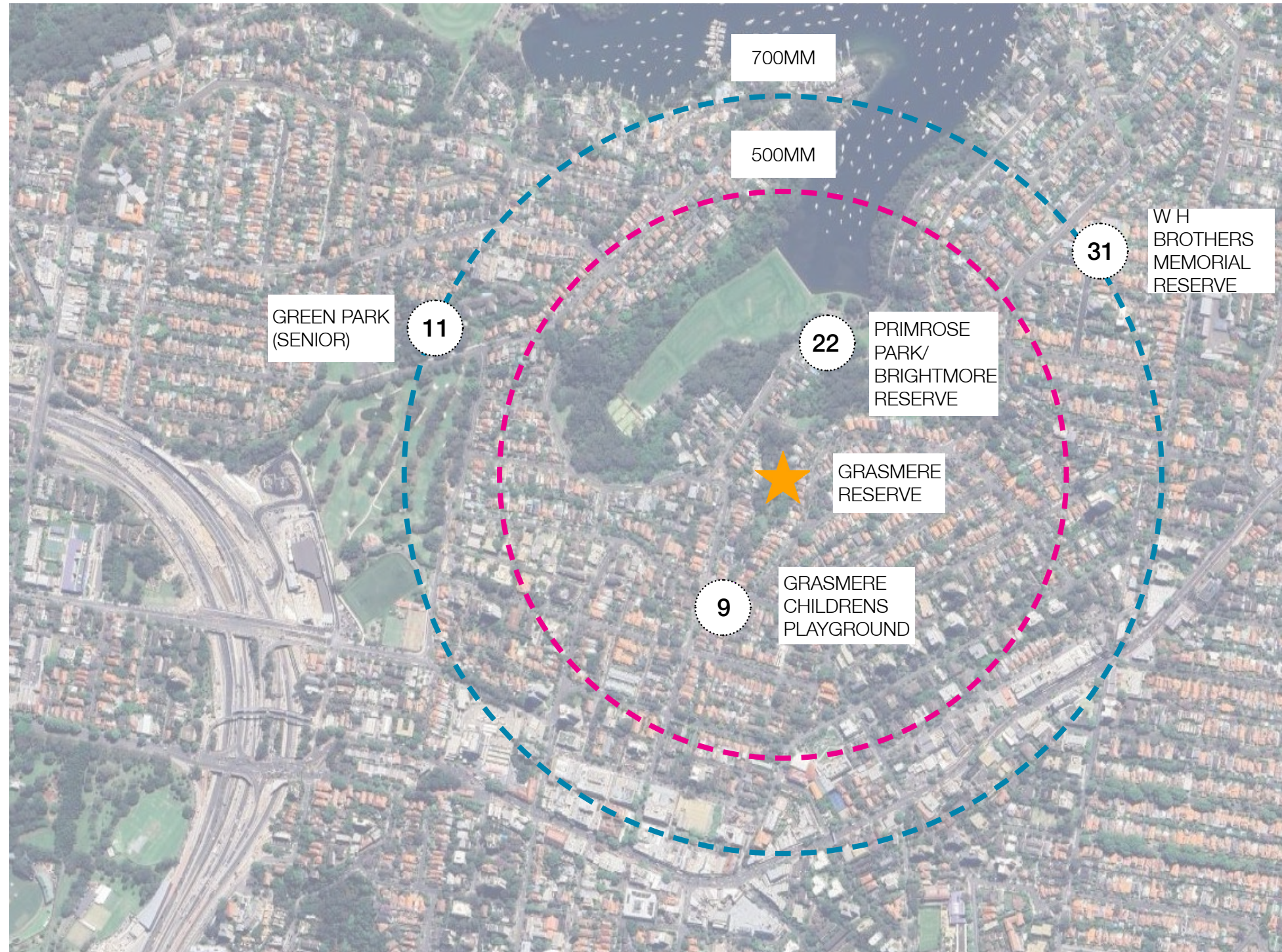


CONCEPT DESIGN, DECEMBER 2024

GRASMERE RESERVE PLAYGROUND UPGRADE

NORTH SYDNEY COUNCIL





- 22: PRIMROSE PARK/ BRIGHTMORE RESERVE
- CYCLE TRACK
 - IMAGINARY PLAY (FIRE ENGINE AND AMBULANCE, CAFE)
 - SWINGS (WITH TODDLER)
 - SLIDE (900MM)
 - BALANCE SURFBOARD
 - MINIATURE SEE-SAW
 - CLIMBING
 - BENCH SEATS
 - FENCED

- 9: GRASMERE CHILDREN'S PLAYGROUND
- SLIDES (900MM)
 - 4 WAY ROCKER
 - SPINNING CUP
 - MINI SPINNER
 - BRIDGE
 - SPRING SKATEBOARD
 - BENCH SEATS
 - FENCED OFF INCL GRASSED AREA
 - BALANCING ROPE CHALLENGE
 - SENSORY WALKWAY
 - PLAY PANELS (BASIC)
 - SWINGS (TODDLER SEAT. ALL-ABILITIES SEAT. STRAP SEAT, YOU AND ME SWING)
 - (NO JUNIOR SLIDE)

- 11: GREEN PARK (SENIOR)
- TRACK RIDE (STRAP SEAT)
 - MIXED CLIMBING STRUCTURE (PLAY PANEL, SLIDE, DOUBLE SLIDE, WEB)
 - PLAY PANEL SHOP
 - 4 WAY ROCKER
 - SPINNER

- 31: W.H. BROTHERS MEMORIAL RESERVE
- ACTIVITY TRAIL / BALANCING CHALLENGE (STEPPING STONES, LOW BRIDGES EMBANKMENT SLIDE)
 - SEATING AREA
 - SPINNER
 - SWINGS (TODDLER AND STRAP SEAT)
 - (DESIGNED FOR UNDER 5S)

MISSING/ LACKING PLAY EXPERIENCES

JUNIOR SLIDE - IMAGINARY PLAY - NATURE PLAY - GRADUATED CHALLENGES



GRASMERE RESERVE

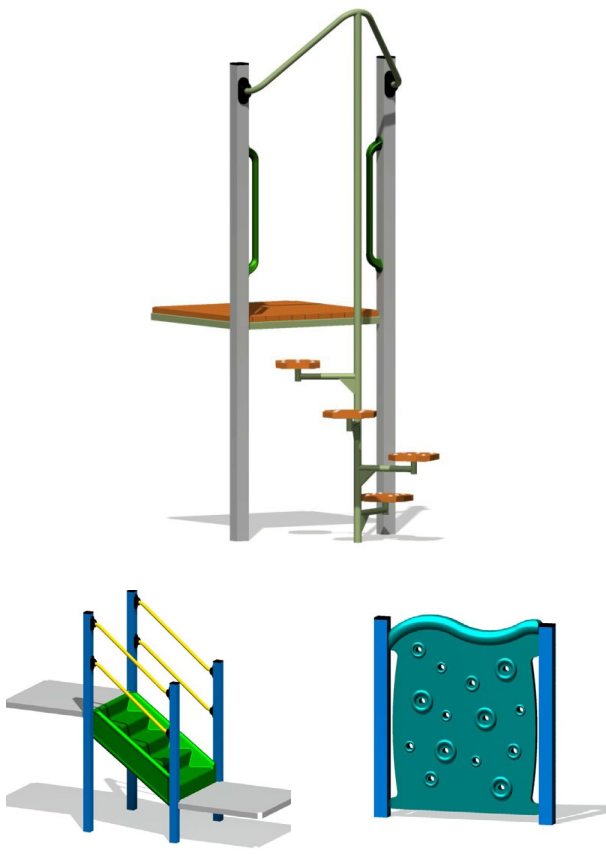
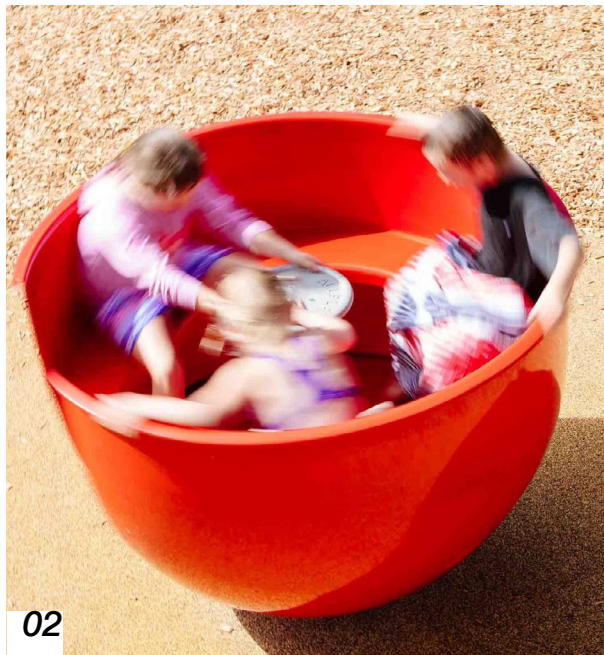


GRASMERE RESERVE PLAYGROUND UPGRADE CONTEXT STUDY - EXISTING PLAYGROUNDS

Scale: 1:100@A3
Dwg no: CP0A
Job: 2407
Date: DEC 2024

PRECEDENTS

- 1. REFURBISHED T-SWING
- 2. REFURBISHED SPINNER
- 3. THEMED BALANCING CHALLENGE
- 4. PICNIC SET
- 5. SANDSTONE CLIMBING + CLAMBERING CHALLENGE
- 6. REPURPOSED SANDSTONE FROM COUNCIL DEPO
- 7. REFURBISHED PLAY STRUCTURE WITH NEW STAIRCASE, STEP CLIMBER + ADDITIONAL PANEL



GRASMERE RESERVE PLAYGROUND UPGRADE
PRECEDENT IMAGES 01

Scale: NTS
Dwg no: CP02
Job: 2407
Date: DEC 2024