

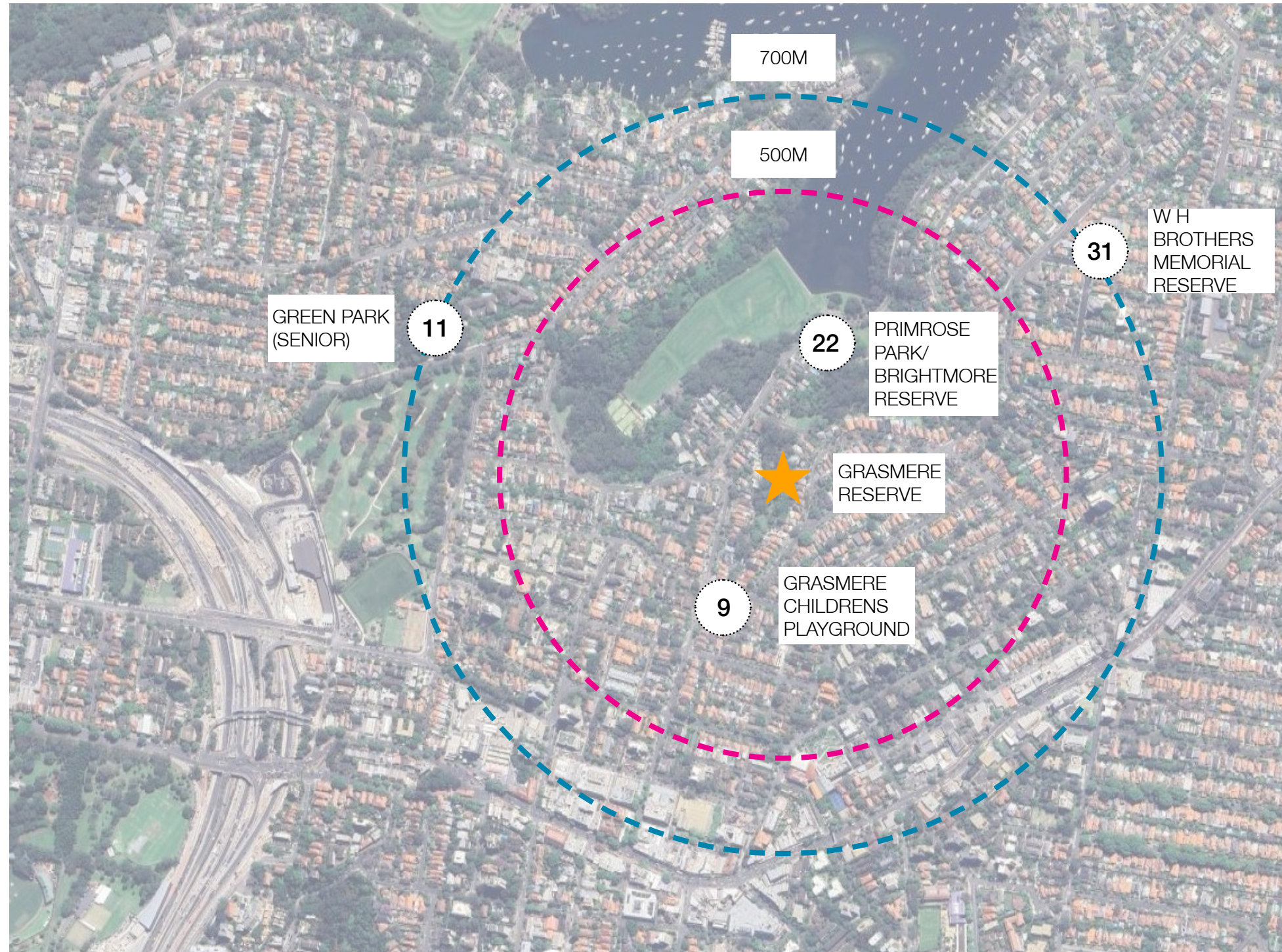


REVISED CONCEPT DESIGN, APRIL 2025

GRASMERE RESERVE PLAYGROUND UPGRADE

NORTH SYDNEY COUNCIL





- 22: PRIMROSE PARK/ BRIGHTMORE RESERVE
- CYCLE TRACK
 - IMAGINARY PLAY (FIRE ENGINE AND AMBULANCE, CAFE)
 - SWINGS (WITH TODDLER)
 - SLIDE (900MM)
 - BALANCE SURFBOARD
 - MINIATURE SEE-SAW
 - CLIMBING
 - BENCH SEATS
 - FENCED

- 9: GRASMERE CHILDREN'S PLAYGROUND
- SLIDES (900MM)
 - 4 WAY ROCKER
 - SPINNING CUP
 - MINI SPINNER
 - BRIDGE
 - SPRING SKATEBOARD
 - BENCH SEATS
 - FENCED OFF INCL GRASSED AREA
 - BALANCING ROPE CHALLENGE
 - SENSORY WALKWAY
 - PLAY PANELS (BASIC)
 - SWINGS (TODDLER SEAT. ALL-ABILITIES SEAT. STRAP SEAT, YOU AND ME SWING)
 - (NO JUNIOR SLIDE)

- 11: GREEN PARK (SENIOR)
- TRACK RIDE (STRAP SEAT)
 - MIXED CLIMBING STRUCTURE (PLAY PANEL, SLIDE, DOUBLE SLIDE, WEB)
 - PLAY PANEL SHOP
 - 4 WAY ROCKER
 - SPINNER

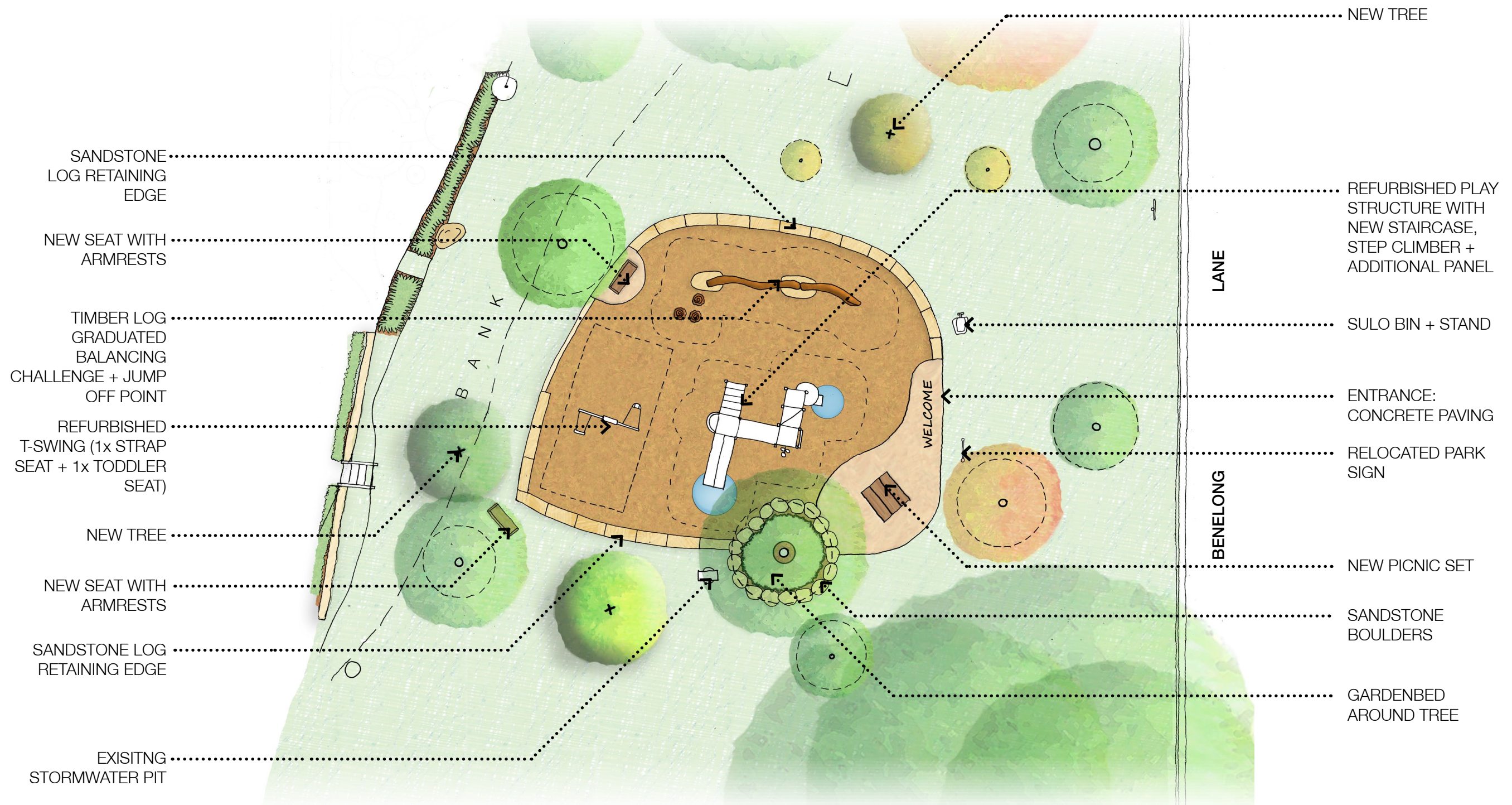
- 31: W.H. BROTHERS MEMORIAL RESERVE
- ACTIVITY TRAIL / BALANCING CHALLENGE (STEPPING STONES, LOW BRIDGES EMBANKMENT SLIDE)
 - SEATING AREA
 - SPINNER
 - SWINGS (TODDLER AND STRAP SEAT)
 - (DESIGNED FOR UNDER 5S)

MISSING/ LACKING PLAY EXPERIENCES

JUNIOR SLIDE - IMAGINARY PLAY - NATURE PLAY - GRADUATED CHALLENGES



NEW PICNIC SET ON
TOP OF THE HILL,
UNDER THE TREES



NOTE: THE PICNIC TABLES AND SEATS ARE FUNDED BY THE LSCA GRANTS PROGRAMME

1:200 at A3

0 0.5 1 2.5 5 10



GRASMERE RESERVE PLAYGROUND UPGRADE REVISED CONCEPT PLAN

Scale: 1:200@A3
Dwg no: RCP01.1
Job: 2407
Date: APR 2025

PRECEDENTS

- 1. REFURBISHED T-SWING
- 2. TIMBER LOG GRADUATED
BALANCING CHALLENGE + JUMP
OFF POINT
- 3. PICNIC SET
- 4. REFURBISHED PLAY
STRUCTURE WITH NEW
STAIRCASE, STEP CLIMBER +
ADDITIONAL PANEL

